

HGP Open Part Number	Schematic Drawing #	Approx Weight (LBS)
HGP0005CW0S0000	31663	35
HGP0005CW0C0000	31663-1	39
HGP0005CW0S1000	31663-PQ1	37
HGP0005CW0C1000	31663-PQ	42

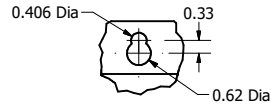
HGP Part Number	HorsePower (HP)	kVar	Harmonic	Voltage (V)	Hz.	Phase
HGP0005CW----	5	1.6	5th	600	60	3

HGP Enclosed Type 1 Part Number	Schematic Drawing #	Approx Weight (LBS)
HGP0005CW1S0000	31663	60
HGP0005CW1C0000	31663-1	64
HGP0005CW1S1000	31663-PQ1	62
HGP0005CW1C1000	31663-PQ	67

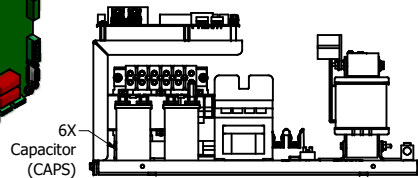
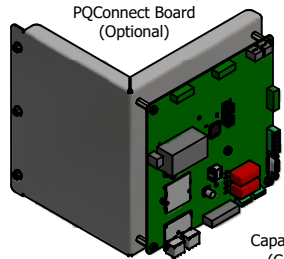
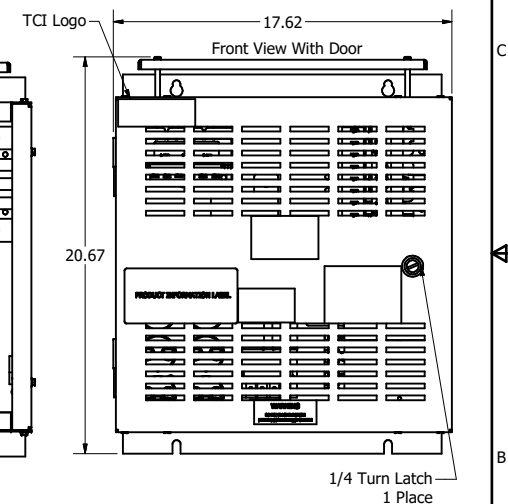
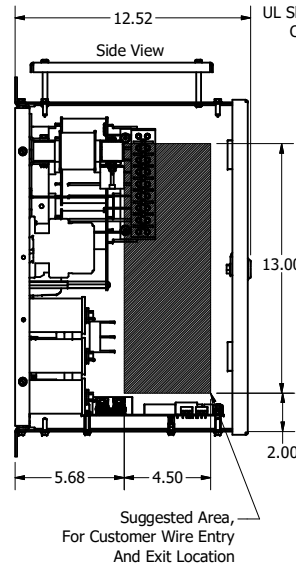
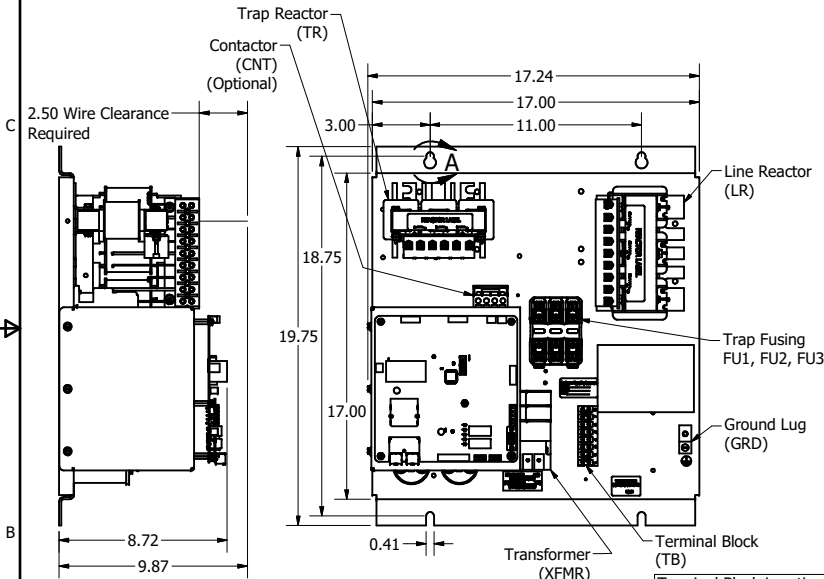
Note: For Torque Information  
See IOM Manual

Customer Connections.  
L1, T1, L2, T2, L3, T3  
Wire Range: 1 AWG to 22 AWG.

Ground Lug  
Wire Range: 1/0 to 14 AWG.

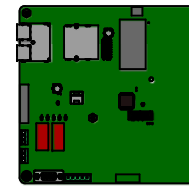


DETAIL A  
Keyslot

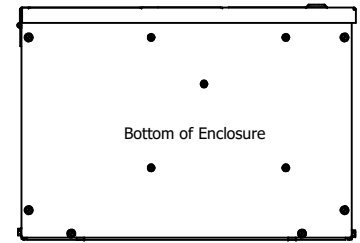


Terminal Block Location  
When Supplied.

Note: Customer is responsible  
for proper cooling of filter  
components on open panels.  
Capacitors Maximum Ambient 50°C.



PQConnect Board  
Mounted on Bottom  
OF Enclosure.  
(Optional)



HGP0005CW----				
Components	0S0000/1S0000	0C0000/1C0000	0S1000/1S1000	0C1000/1C1000
Line Reactor (LR)	X	X	X	X
Trap Reactor (TR)	X	X	X	X
Capacitor (Cap)	X	X	X	X
Trap Fusing, FU1, FU2, FU3	X	X	X	X
Contactor (CNT)		X		X
Transformer (XFMR)		X	X	X
XFMR Fusing, FU4, FU5		X	X	X
PQConnect Board			X	X

TCI, LLC CLAIMS PROPRIETARY RIGHTS IN THE MATERIAL HEREIN DISCLOSED. IT IS SUPPLIED WITHOUT PREJUDICE TO ANY PATENT RIGHTS OF TCI AND MAY NOT BE REPRODUCED OR USED TO MANUFACTURE ANYTHING SHOWN THEREIN WITHOUT WRITTEN PERMISSION FROM TCI.

REV	DATE	BY	DESCRIPTION
A	06/21/19	JHM	AS DESIGNED
NO			REVISION

Material(s) Shall be RoHS Compliant

**TCI** W132 N10611 Grant Drive  
Germantown, WI 53022

HarmonicGuard Passive  
HGP, SHP, 600/3/60, Open and Type 1

DATE: 06/21/19  
SCALE: 1/5  
SHEET: 1 OF 1